

GenCheck DNA Extraction kit [Type S/F]

For Soil and Fecal DNA



Product features

- Combined use of the chemical lysis method and the physical cell disruption method.
- Extracted from microorganisms with strong cell walls by Beads Beating.
- DNA can be extracted easily and quickly by a spin column.

Kit contents

① Lysis Solution M	50 ml×1
② Lysis Solution S	2 ml×1
③ Purification Solution	20 ml×1
④ Wash Solution 1	60 ml×1
⑤ Wash Solution 2	30 ml×1
⑥ TE(pH8.0)	5 ml×1
⑦ RNase A(100mg/mL)	100 µl×1
⑧ Beads Tube	50pcs×1
⑨ Spin Column	50pcs×1



For Soil and Fecal DNA

GenCheck DNA Extraction kit [Type S/F]

GenCheck® DNA Extraction Kit Type S/F is a kit for extracting DNA from soil and fecal samples. It combines the chemical lysis method with a surfactant and a physical cell disruption method by Beads Beating as the method to extract DNA. And, DNA is collected by centrifugation using a membrane based spin column used for collecting DNA. Therefore, DNA can be extracted easily and quickly.

Ex.1) Absorbance measurement result of DNA extracted with this kit

Sample	Place	N=3	Conc.(ng/μl)	λ 260/λ 280	λ 260/λ 230
Andosol	Tochigi, Japan	1	16.2	1.78	0.44
		2	15.2	1.67	0.44
		3	18.7	1.68	0.47
Volcanic ash soil	Mt.Fuji, Japan	1	11.6	1.77	0.29
		2	19.2	1.52	0.38
		3	16.2	1.6	0.34
Field soil A	Nagasaki, Japan	1	35.4	1.8	1.11
		2	40.9	1.84	1.4
		3	65.2	1.79	1.55
Field soil B	Nagasaki, Japan	1	51.5	1.79	1.44
		2	44.9	1.79	1.35
		3	41.4	1.78	1.09

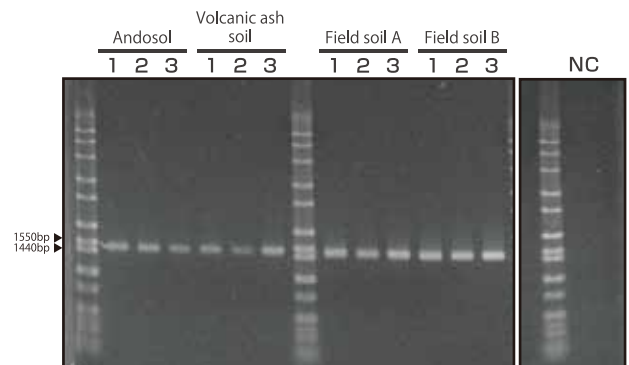
Ex.2) Results of PCR using the extracted DNA of Example 1

- ExTaq polymerase/Takara
- 27F/1492R
- Template DNA : 1ng/μl 5μl ※20μl / 20cycle

[Concentration measurement result by Qubit]

Sample	Place	N=3	Conc.(ng/μl)
Andosol	Tochigi, Japan	1	1.48
		2	1.95
		3	0.95
Volcanic ash soil	Mt.Fuji, Japan	1	1.42
		2	0.81
		3	2.04
Field soil A	Nagasaki, Japan	1	2.99
		2	2.79
		3	5.61
Field soil B	Nagasaki, Japan	1	3.63
		2	2.96
		3	4.03
		NC	Low

[Agarose electrophoresis(0.8%) * Load : 5 μl]



Product name	Catalog #	Size	Price
GenCheck® Extraction kit [Type S/F]	GC002-1N	50 prep	Contact

FASMAC CO.,LTD

5-1-3, Midorigaoka, Atsugi, Kanagawa, 243-0021 Japan

TEL : +81-46-295-8787 FAX : +81-46-294-3738

Web : <http://fasmac.co.jp>